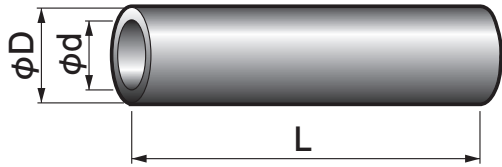


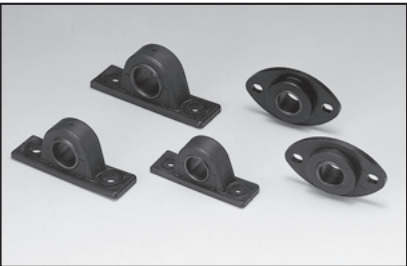
Specify Part No. by required I.D. and O.D.  
(e.g.) I.D. is 48.5mm and O.D. is 62.5mm.

**80S - 5060**

Part No.



Part No.	I.D.		O.D.		Length L
	φd	Tolerance	φD	Tolerance	
80S-2030	19	±0.4	31.5	±0.4	500
80S-2535	24	±0.4	36.5	±0.4	500
80S-3040	28.5	±0.5	42	±0.5	500
80S-3545	34	±0.5	47	±0.5	500
80S-3550	34	±0.5	52	±0.5	500
80S-4055	38	±0.5	56.5	±0.5	500
80S-4060	38	±0.5	62.5	±0.5	500
80S-4560	43	±0.5	62.5	±0.5	500
80S-4565	43	±0.5	67	±0.6	500
80S-5060	48.5	±0.5	62.5	±0.5	500
80S-5065	48.5	±0.5	67	±0.6	500
80S-5070	48.5	±0.5	72.5	±0.6	500
80S-5565	53.5	±0.6	67.5	±0.6	500
80S-5570	53.5	±0.6	72.5	±0.6	500
80S-5575	53.5	±0.6	78	±0.6	500
80S-6075	58.5	±0.6	78	±0.6	500



Feature

- Has the same features as 80.
- Demonstrates superior sliding performance in sliding motion.
- The whole bearing unit is made of plastic. Small, lightweight, and superior corrosion resistance.
- The standard products are available in various sizes.

Service range

Operating condition	Intermittent	Continuous
Service temperature range °C	-20~+60	
Allowable max. pressure P N/mm <sup>2</sup> {kgf/cm <sup>2</sup> }	2.0 {21}	
Allowable max. velocity V m/s {m/min}	0.40 {24}	0.25 {15}
Allowable max. PV value N/mm <sup>2</sup> · m/s {kgf/cm <sup>2</sup> · m/min}	0.50 {306}	0.30 {184}