

## OCFC13-ST6 High reaction force type for high tensile strength steel sheets

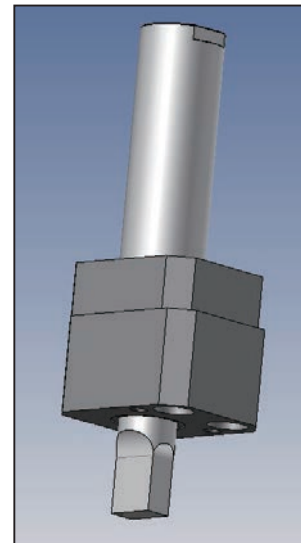
### Performance Metrics

|             |                  |
|-------------|------------------|
| Shear Force | 13kN             |
| Stroke      | 6mm              |
| Durability  | 500,000 cycles * |
| Unit Weight | 3.8kg            |

\* Performance measurement is based on in-house test results. Durability performance under customer usage environments and conditions is not guaranteed.

### List of Models

Standard type : OCFC13-ST6



OCFC13-ST6

### Advantages

#### ● improved shearing capacity

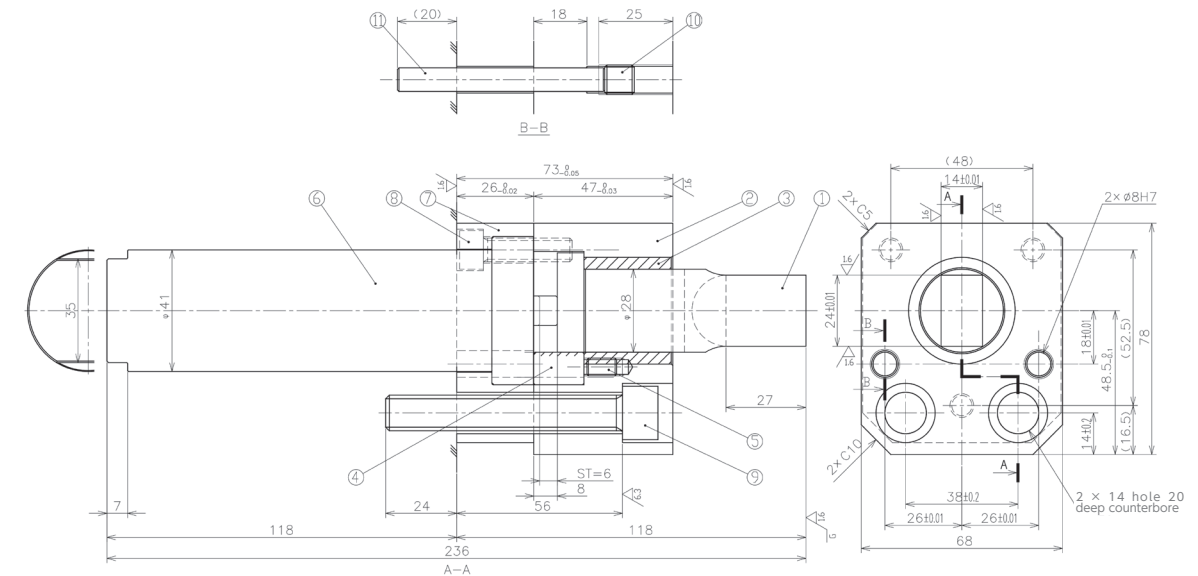
Shear force improved from 5kN of past product (OCFC5A) to 13kN.

This enable to cut high tensile steel.

#### ● Increased movable range of cutter

The stroke range has been extended to 6mm, enabling shearing of thicker panels than the prior products (OCFC5A).

### Structure



| Shear Force<br>500,000Cycles | Stroke | Reaction force at<br>stroke end | Unit Weight |
|------------------------------|--------|---------------------------------|-------------|
| 13.0kN {1.32tonf}            | 6.0mm  | 35.0kN {3.77tonf }              | 3.8kg       |

| No. | Part Number   | Material     | Remarks           |
|-----|---------------|--------------|-------------------|
| 1   | Cutter        | Steel        | SKD11(HRC60 ~ 63) |
| 2   | Cutter holder | Steel        | S45C              |
| 3   | Guide bush    | Oiles 2000   |                   |
| 4   | Guide plate   | Oiles 2000   |                   |
| 5   | Screw plug    |              | M6 × 10           |
| 6   | Spring        | Oiles Spring | —                 |

| No. | Part Number                        | Material | Remarks                          |
|-----|------------------------------------|----------|----------------------------------|
| 7   | Spring holder                      | Steel    | S45C                             |
| 8   | Hexagon socket<br>head cap screw   |          | M8 × 30<br>(Self-locking nut)    |
| 9   | Hexagon socket<br>head cap screw * |          | M12 × 80                         |
| 10  | Screw plug                         |          | M10 × 10                         |
| 11  | Parallel pin                       |          | φ 8 × 70<br>(M6 type with screw) |