

OCFC5A-ST4 Compact type for Ordinal Steel Sheets

Performance metrics

Shear Force	5kN
Stroke	4mm
Durability	500,000 cycles*
Unit Weight	1.9kg

* Performance measurement is based on in-house test results. Durability performance under customer usage environments and conditions is not guaranteed.

List of Models

Standard type : OCFC5A-ST4

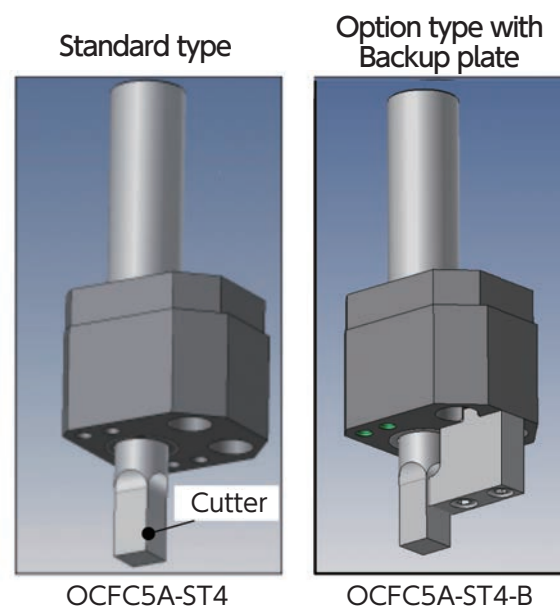
**Option type with Backup plate :
OCFC5A-ST4-B**

Change of cutter material : OCFC5A-ST4-S

* SKD11 is used for cutter material.

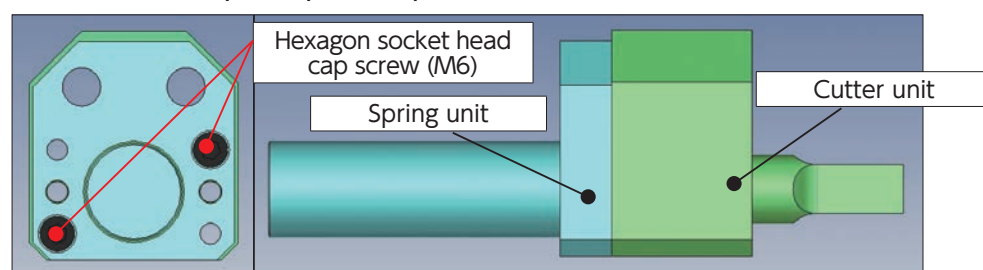
OCFC5A-ST4-S-B

* Please contact our sales office for the delivery lead time, as it will be made to order.



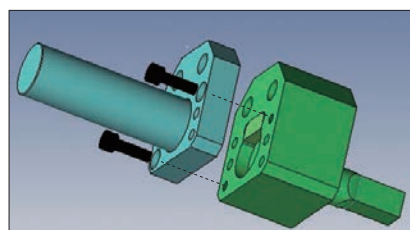
Separable structure for easy profile processing

- For it can be disassembled into cutter and spring unit, realizing easier machine set-up for profile process.



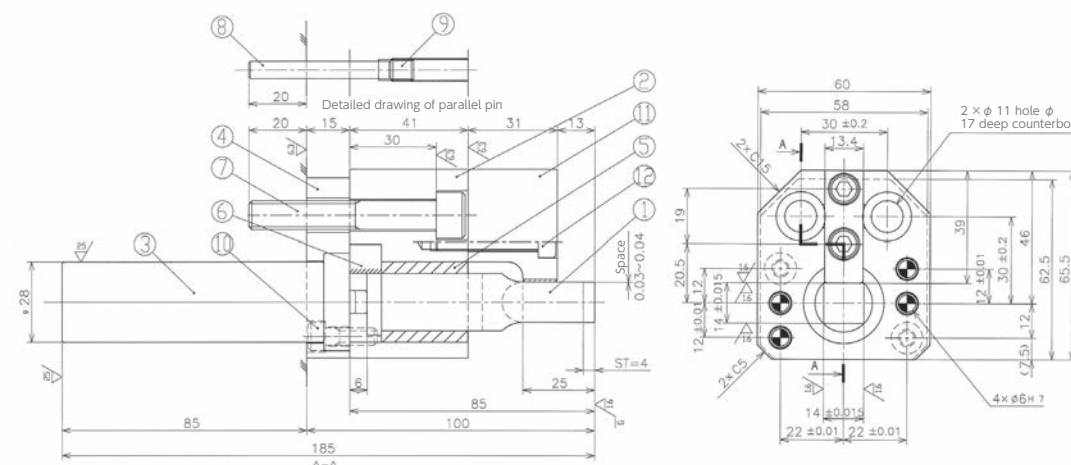
- ※ 1. When installing bolts, applying anti-loosening agents.
- ※ 2. Do not disassemble or assemble the product any further due to assembly accuracy.

Method of assemble / disassemble



- Loosen hexagon socket head cap screw (2 screws)

Structure



	OCFC5A-ST4 (Standard type)	OCFC5A-ST4-B (Option type with Backup plate)
Trimming Angle	10°	10°
Scrap Cutting Angle	10°	20°

Shear Force 500,000Cycles	Stroke	Reaction force at stroke end	Unit Weight
5.0kN {0.51tonf}	4.0mm	15.0kN {1.53tonf }	1.9kg

No.	Part Number	Material	Remarks
1	Cutter	Steel	Frame hardened steel SKD11(HRC60 ~ 63)
2	Cutter holder	Steel	S45C
3	Spring	Oiles Spring	—
4	Spring holder	Steel	S45C
5	Guide bush	Oiles 2000	
6	Guide plate	Oiles 2000	
7	Hexagon socket head cap screw	Steel	M10 × 65
8	Parallel pin		φ 6 × 50 (M6 type with screw)
9	Screw plug		M8 × 8
10	Hexagon socket head cap screw		M6 × 18 (Self-locking nut)
11	Back-up plate *	Oiles 2000	
12	Hexagon socket head cap screw for Back-up plate *		M6 × 35 (Self-locking nut)

* 11, 12 are 11 and 12 are dedicated parts for backup specification OCFC5A-ST4-B